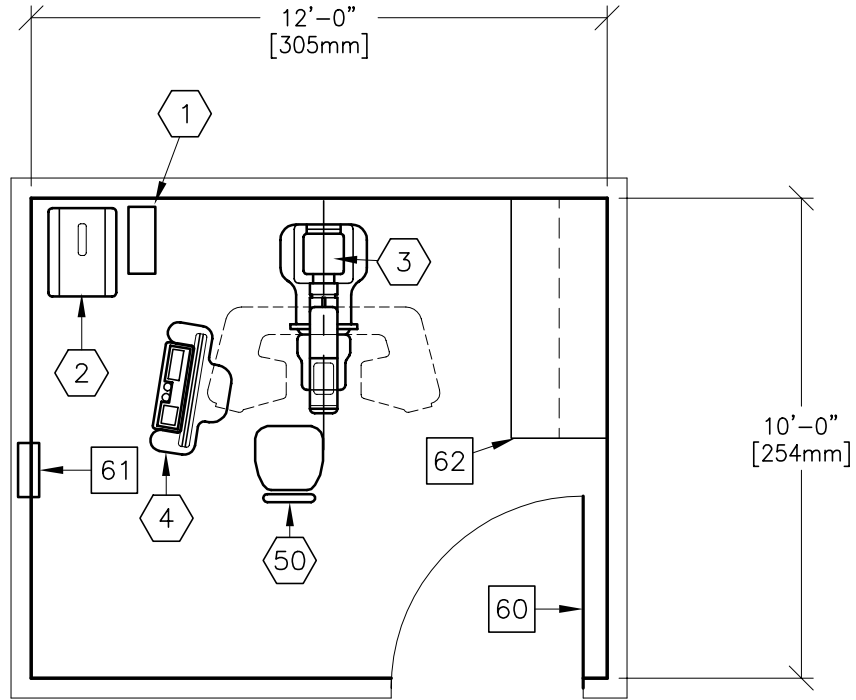
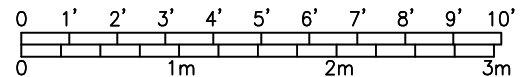




# SENOGRAPHE DMR



ROOM DIMENSIONS	LENGTH & WIDTH	CEILING HEIGHT
MINIMUM:	10'-0" x 12'-0" [3.5m x 3.7m]	7'-8" [2.3m]



SEE APPENDIX "A" FOR POWER SPECIFICATIONS

ROOM PLAN LOCATED ON PAGE 9-10

ITEM	QUANTITY			
⬡		ITEM DESCRIPTION	WEIGHT	HEAT OUTPUT
⬡1	1	EDM TOWER FOR SENOGRAPHE DMR	33 lbs	976 btu
⬡2	1	SENOGRAPHE DMR GENERATOR CABINET	231 lbs	
⬡3	1	SENOGRAPHE DMR MAMMOGRAPHY GANTRY	634 lbs	4952 btu
⬡4	1	SENOGRAPHE DMR CONTROL CONSOLE WITH RAD SHIELD SCREEN	72 lbs	
⬡50	1	HYDRAULIC CHAIR		
<p>*****  <b>CUSTOMER/CONTRACTOR SUPPLIED AND INSTALLED ITEMS</b>                  *****</p>				
⬡60		MINIMUM DOOR OPENING FOR EQUIPMENT DELIVERY IS 30 IN. W x 77 IN. H [762mm x 1956mm], CONTINGENT ON A 60 IN. [1524mm] CORRIDOR WIDTH		
⬡61		MAIN DISCONNECT		
⬡62		COUNTER TOP WITH BASE AND WALL CABINETS		

ENVIRONMENT

Ambient Operation Temperature: 50-104° F (10-40° C)  
 Allowable Temperature Change: 15° F (10° C) per hour  
 Humidity: 30-75 percent non condensing  
 Allowable Humidity Change: 10 percent per hour  
 Max - Altitude: 9500 ft. (29,000 M) above sea level